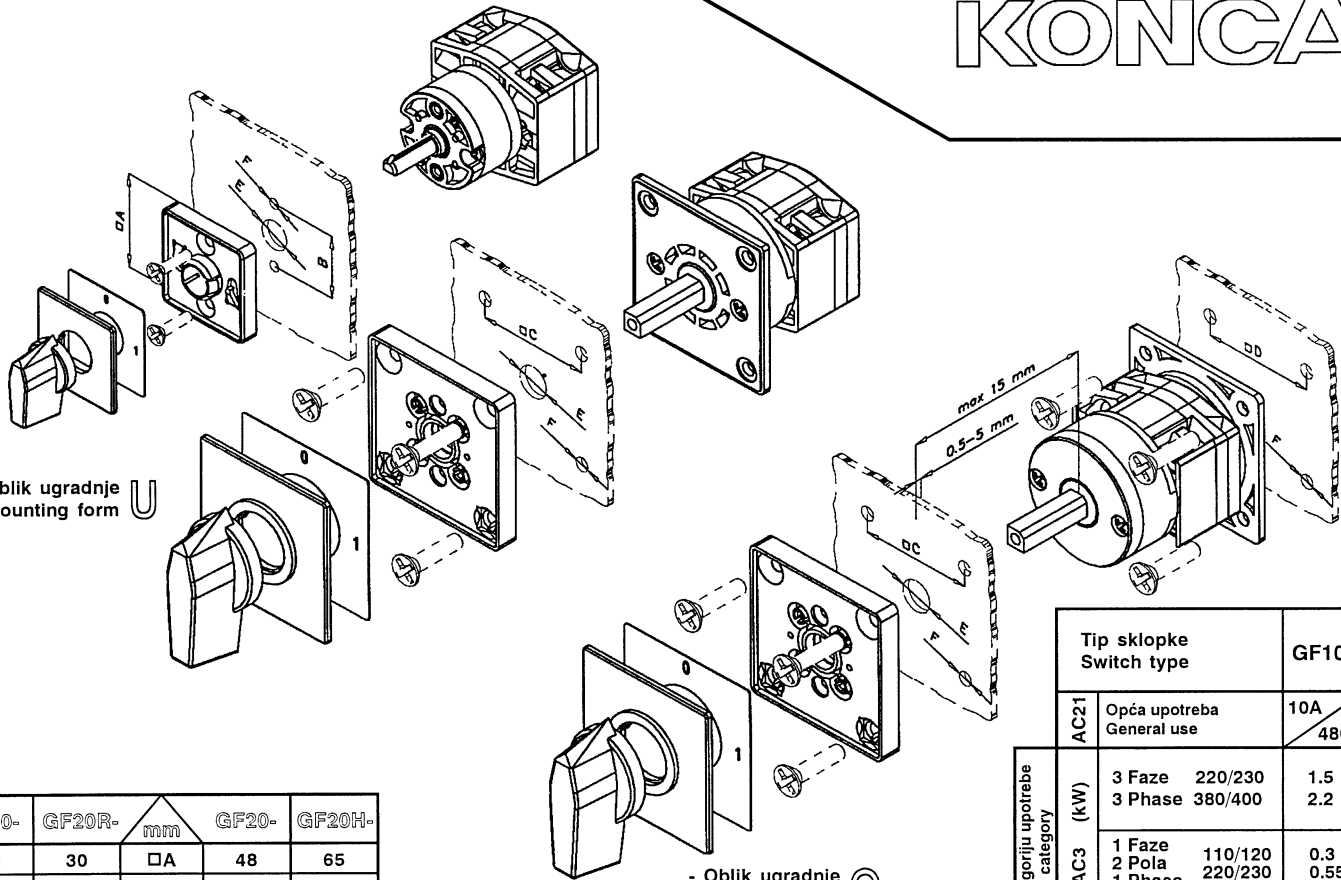


KONČAR



- Oblik ugradnje U
- Mounting form U

- Oblik ugradnje O
- Mounting form O

GF10-	GF20R-	mm	GF20-	GF20H-
30	30	□A	48	65
20	20	B	-	-
-	-	□C	36	48
-	-	□D	-	36 48 -
9	9	∅E	12	12 14 14
3.2	3.2	∅F	5	5 5 5
U			U	O U



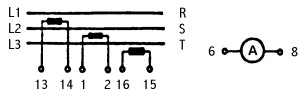
Suitable for use with Class RK5 fuses, on a circuit capable of delivery not more than 5 kA RMS symmetrical amperes, 240 V ac.



Motorška sklopka za kategoriju upotrebe
Motor switch in utilization category

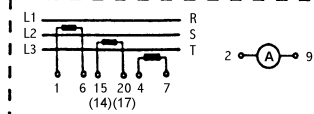
Tip sklopke Switch type		GF10-	GF20- GF20R- GF20H-
AC21	Opća upotreba General use	10A 480V	20A 480V
AC3	3 Faze 220/230 3 Phase 380/400	1.5 2.2	3.0 5.5
	1 Faze 110/120 2 Pola 220/230 1 Phase 380/400 2 Pole	0.3 0.55 0.75	0.8 2.2 3.0
AC23	3 Faze 220/230 3 Phase 380/400	1.8 3.0	5.0 7.5
	1 Faze 110/120 2 Pola 220/230 1 Phase 380/400 2 Pole	0.37 0.75 1.1	- 2.5 3.7

AMPERMETARSKJE SKLOPKE / AMMETER SWITCHES

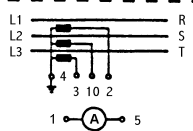


58

() GF20, GF20H

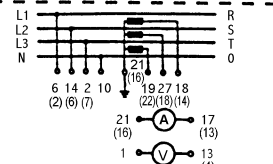


97



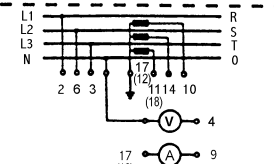
98

VOLTMETARSKO - AMPERMETARSKJE SKLOPKE
VOLTMETER - AMMETER SWITCHES



61

() GF20, GF20H



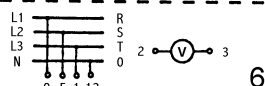
64

() GF20, GF20H

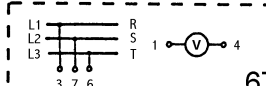
VOLTMETARSKJE SKLOPKE / VOLTMETER SWITCHES



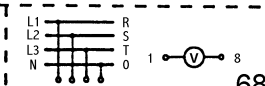
60



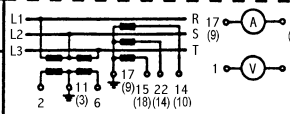
66



67



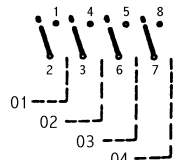
68



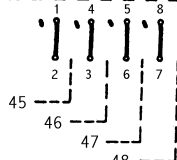
65

() GF20, GF20H

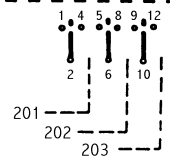
SKLOPKE SA POVRATOM - KUT ZAKRETA 30°
SWITCHES SPRING RETURN WITH 30° SWITCHING



01

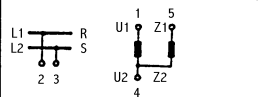


45

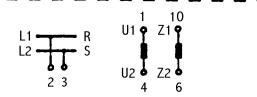


201

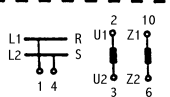
SKLOPKE ZA POKRETANJE JEDNOFAZNIH MOTORA
START AND RUN SWITCHES



15

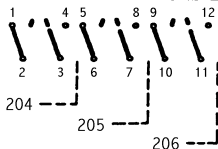


16

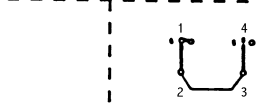


17

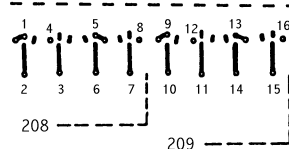
UPRAVLJAČKE SKLOPKE SA POVRATOM / CONTROL SWITCHES (WITH SPRING RETURN)



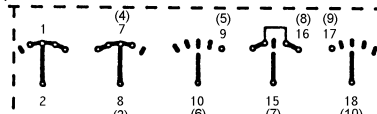
204



207



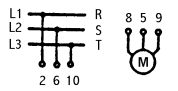
208



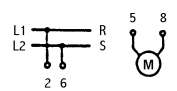
210

() GF20, GF20H

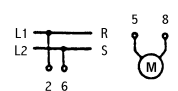
MOTORSKE REVERZIJNE SKLOPKE / MOTOR REVERSING SWITCHES



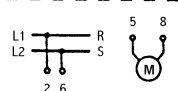
11



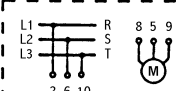
14



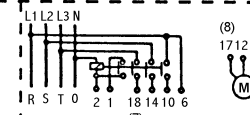
24



25



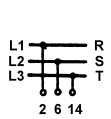
26



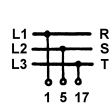
27

() GF20, GF20H

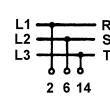
ZVIJEZDA - TROKUT SKLOPKE / STAR - DELTA SWITCHES



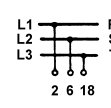
12



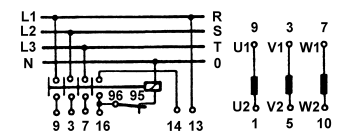
21



28

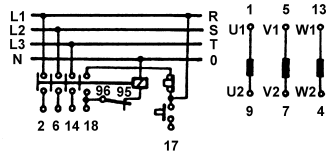


29

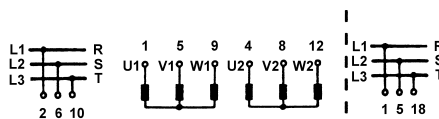


31

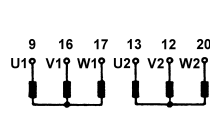
SKLOPKE ZA UPRAVLJANJE MOTORIMA (ODVOJENI NAMOTI) MOTOR CONTROL SWITCHES (SEPARATE WINDINGS)



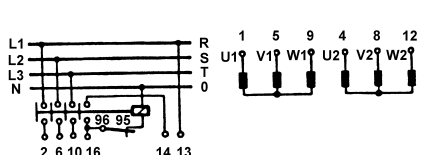
49



22

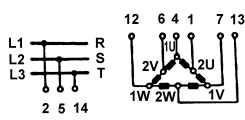


23

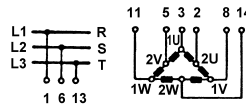


33

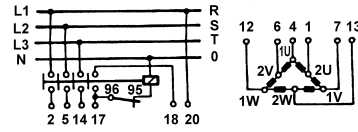
SKLOPKE ZA UPRAVLJANJE MOTORIMA (DAHLANDER) / MOTOR CONTROL SWITCHES (DAHLANDER)



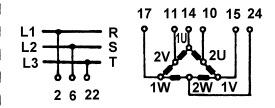
13



19

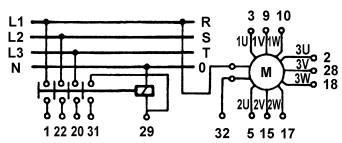


32

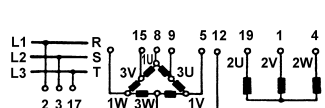


20

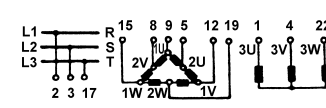
SKLOPKE ZA UPRAVLJANJE TROBRZINSKIM MOTORIMA / SWITCHES FOR 3-SPEED MOTOR CONTROL



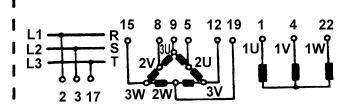
18



34

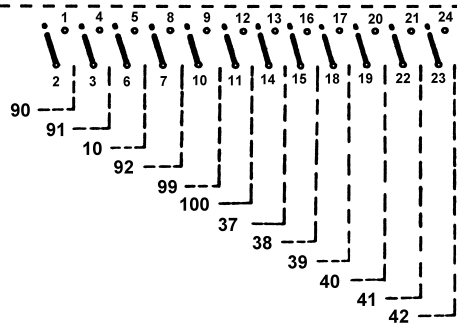


35

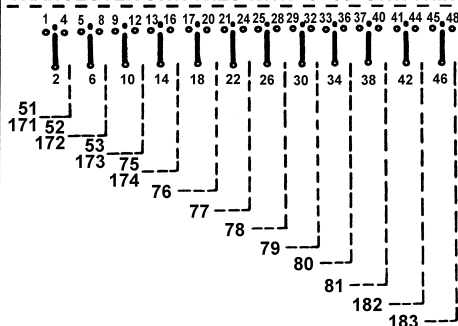


36

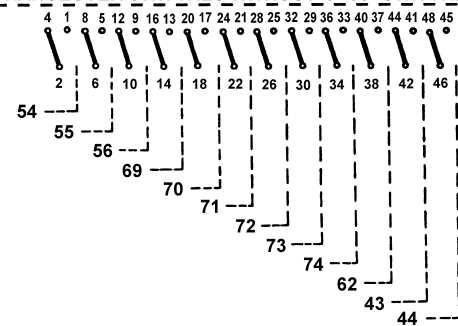
**SKLOPKE SA KUTEM ZAKRETA 60°
SWITCHES WITH 60° SWITCHING**



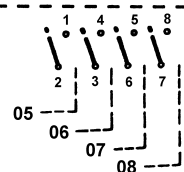
**PREKLOPKE SA "0" POLOŽAJEM SA
KUTEM ZAKRETA 60°
CHANGEOVER SWITCHES WITH "0" 60° SWITCHING**



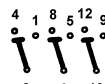
**PREKLOPKE BEZ "0" POLOŽAJA SA
KUTEM ZAKRETA 90°
CHANGEOVER SWITCHES WITHOUT "0" 90° SWITCHING**



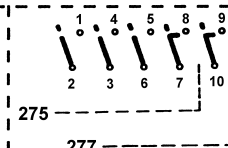
SKLOPKE SA KUTOM ZAKRETA 90°/ SWITCHES WITH 90° SWITCHING



09

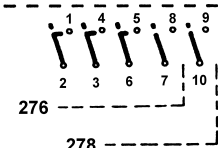


57



275

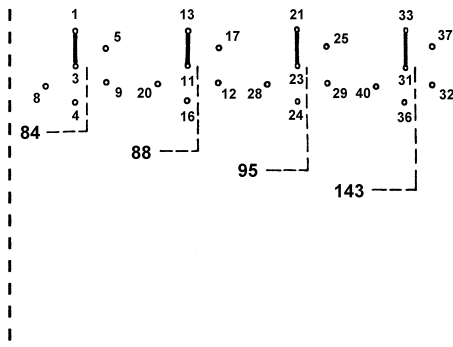
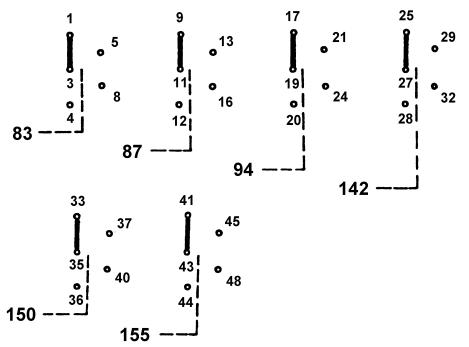
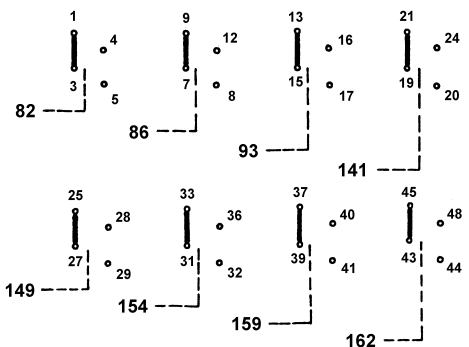
277



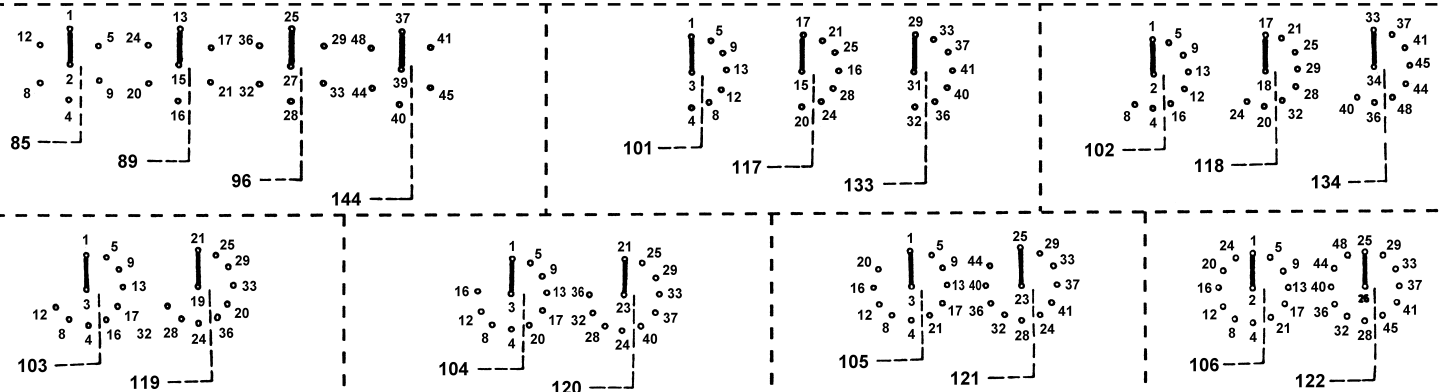
276

278

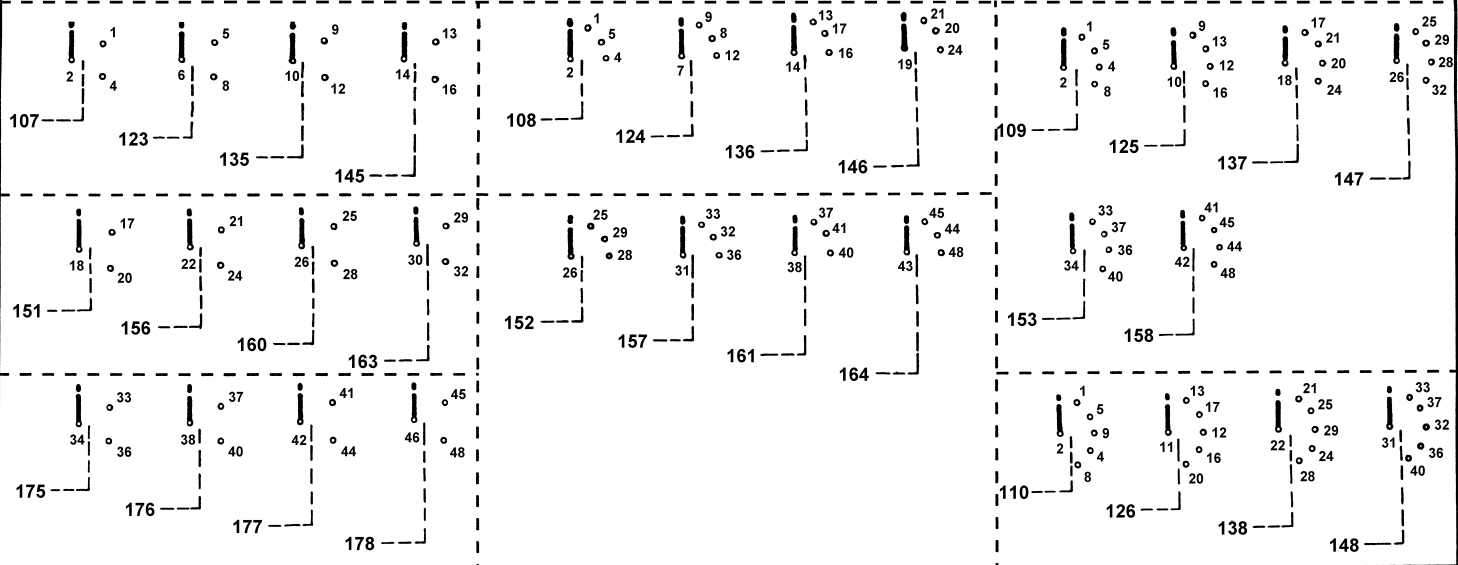
STEPENASTE SKLOPKE BEZ "0" POLOŽAJA / MULTI-STEP SWITCHES WITHOUT "0"



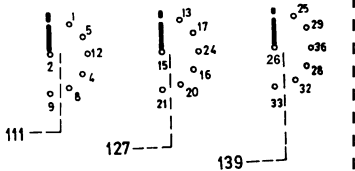
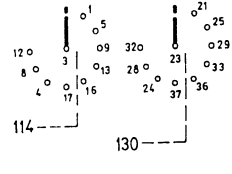
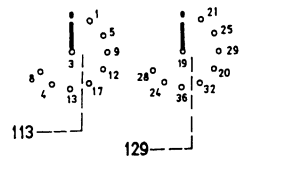
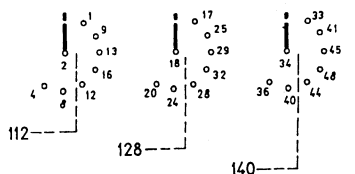
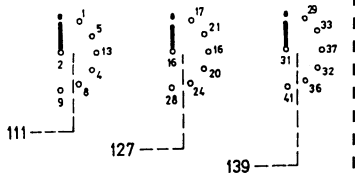
STEPENASTE SKLOPKE BEZ "0" POLOŽAJA / MULTI-STEP SWITCHES WITHOUT "0"



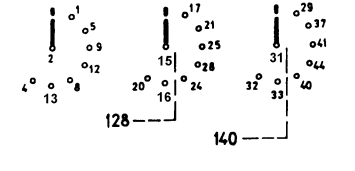
STEPENASTE SKLOPKE SA "0" POLOŽAJEM / MULTI-STEP SWITCHES WITH "0"



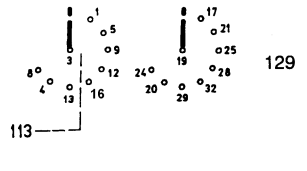
STEPENASTE SKLOPKE SA "0" POLOŽAJEM / MULTI-STEP SWITCHES WITH "0" POSITION



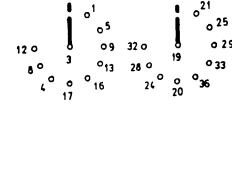
GF20, GF20H



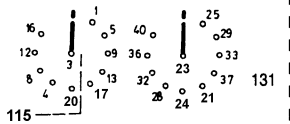
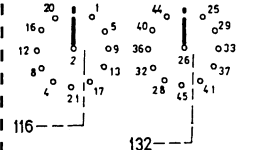
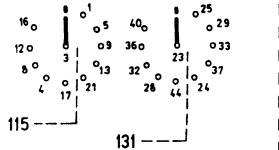
GF20, GF20H



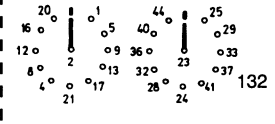
GF20, GF20H



GF20, GF20H

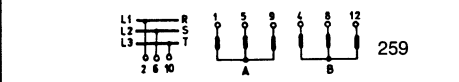
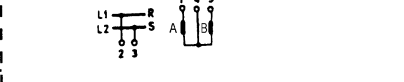
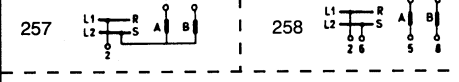
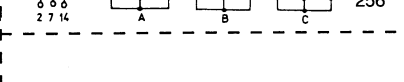
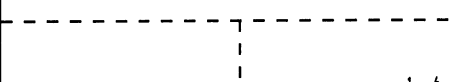
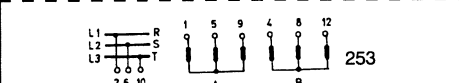
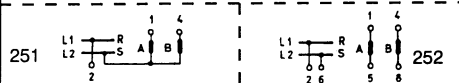


GF20, GF20H



GF20, GF20H

GRUPNE SKLOPKE / GANG SWITCHES



260